

**Wildwood  
Environmental Academy  
Title I  
Parent Meeting**



**September 27, 2023**

# Agenda

- **Welcome and Introductions**
- **What is Title I?**
- **Title I Services at WEA**
- **How we use Title I Funds**
- **Standards, Curriculum and Assessments**
- **Parents Right to Know and Parent School Compact**
- **Parent and Family Engagement**
- **Questions?**



# What Is Title 1?

- It is the largest single federal aid program for elementary and secondary education. It is in 90% of the nation's school districts.
- It is part of the Elementary and Secondary Education Act.
- The purpose of Title I is to provide all children a significant opportunity to receive a fair, equitable, and high-quality education, and to close educational achievement gaps.
- Title I funds provide additional academic support and learning opportunities to struggling learners aimed at increasing student achievement.



# Title 1 at WEA

- **Wildwood Environmental Academy has a school-wide Title I program.**
- **The goal of Title I services at Wildwood Environmental Academy is to close the learning gaps struggling learners have in reading and/or math.**
- **Struggling learners qualify for Title I services by having low standardized assessment/benchmark scores, teacher recommendation, and/or administration's recommendation.**
- **Not all students who are struggling with reading and/or math qualify for Title I services.**
- **Title I services are completely different from Special Education services.**

# Title 1 services at WEA

- **Instruction is based on targeted ELA and math skills from using data from benchmark assessments, the NWEA assessment, and teacher observation.**
- **Daily push-in and pull-out services for Kindergarten-12th grade in ELA and math.**
- **Small group instruction for specific students by the Title I teacher(s) and supportive staff.**



# **Title 1 services at WEA**

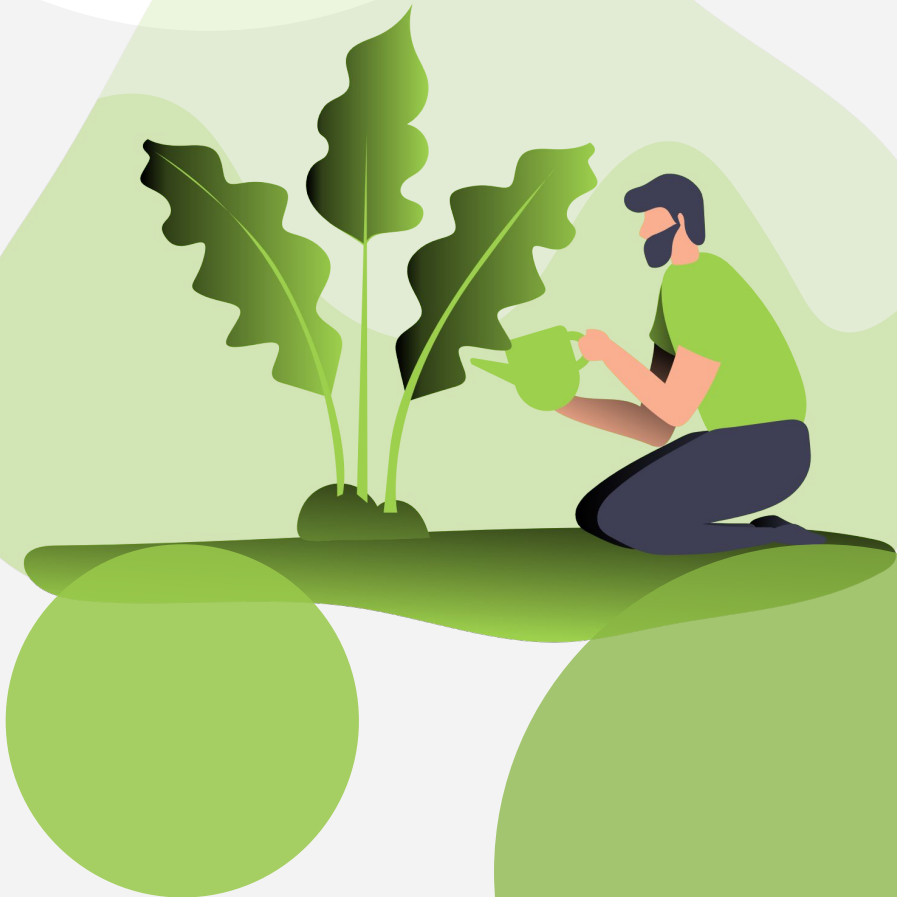
- **Parents and/or guardians will be notified if their child has been placed in Title I with a letter from the school.**
- **Title I students will participate in ongoing progress monitoring of targeted skills to ensure academic growth.**
- **Students could spend a couple of weeks to an entire year in Title I depending on each round of assessments given in the Fall, Winter, and Spring.**

# How does WEA use Title 1 for services?

- Additional Staffing
- Supplemental Resources
- Technology
- Family Nights
- Classroom Supplies
- Professional Development for Staff
- Summer School
- Tutoring

# ELA and math curriculum

- ❑ Elementary (K-6th Grade) uses:
  - SuperKids; American Reading Curriculum
  - Envision Math Program; Engage New York
  - Strategies for Writers
  
- ❑ Middle/High School (7<sup>th</sup> – 12<sup>th</sup> Grade) uses:
  - American Reading Curriculum; Strategies for Writers
  - **Envision Math Program**; Engage New York
  
- ❑ Supplemental: (web-based programs)
  - Moby Max
  - Happy Numbers
  - Reading A-Z





# Assessments and benchmarks

## ◆ Benchmark Assessments

- Curriculum based and teacher created
- Administered every 6-7 weeks

## ◆ Instructional Learning Cycles

## ◆ NWEA

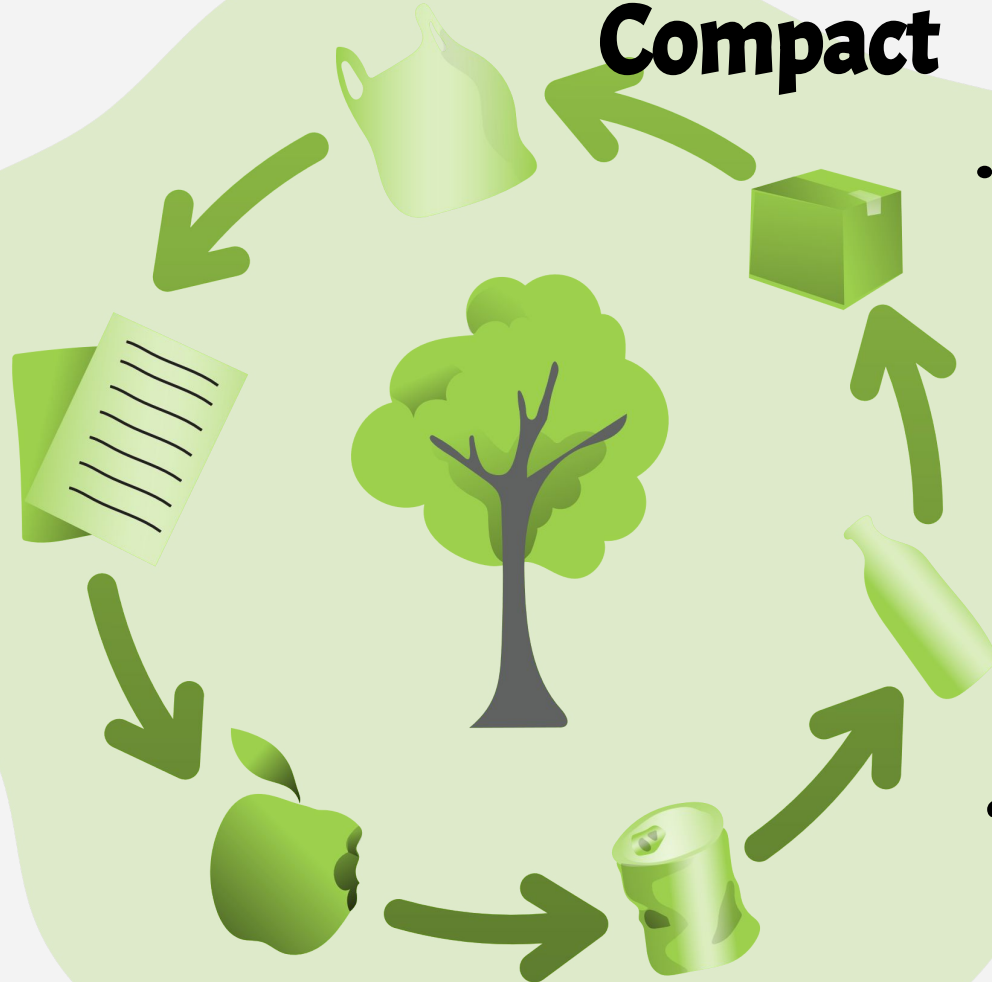
- Adaptive Assessment - it adapts questions to what student knows to get a score.
- It is administered 3 times a year (Fall, Winter, and Spring)
- All students are assessed: K-12

# Parents' Right to Know and Parent-School Compact

- **Parents can request information about the professional qualifications of their child's teacher(s) at any time.**
- **Parents will be notified if their child is taught by a teacher who does not meet state certification or licensure requirements in the area they are teaching.**
- **Parents may request that their child(ren) have the right to opt out of assessments.**



# Parents Right to Know and School-Parent Compact



- **The School-Parent Compact (the WEA Handbook) is the agreement you made which outlines that the school, parent(s), and student all share the responsibility of the student's academic achievement. It is an equal partnership for all.**
- **Parents are annually involved in the development of the Parent and Family Engagement Policy.**

# Parent and family engagement

- **What is parent and family engagement?**
  - It is a commitment to your child's education.
  - It is active participation in your child's education.
- **Why is parent and family engagement important for the success of students?**
  - It helps students earn higher grades and test scores.
  - It is a predictor of success in school (pass classes, earn credits, etc.)
  - It helps students develop good social skills and behaviors.
  - Students are more likely to graduate and go to post-secondary school.



# Parent and family engagement

## How can I get involved at Wildwood?

- ✦ Start building relationships with your child's school (teachers, principals, support staff, etc.).
- ✦ Have a discussion about school with your child every day.
- ✦ Attend conferences, family nights, and other school events throughout the school year.
- ✦ Get involved with the **P.T.O.**
- ✦ Volunteer at the school or school functions
- ✦ Like us on Facebook and read our posts.

# Title 1 contact information



**Elizabeth Lewin**  
**School Leader**  
**419-868-9885**

**[elizabeth.lewin@leonagroupmw.com](mailto:elizabeth.lewin@leonagroupmw.com)**

**Any Questions?**



**Thank you for  
your time!**

